

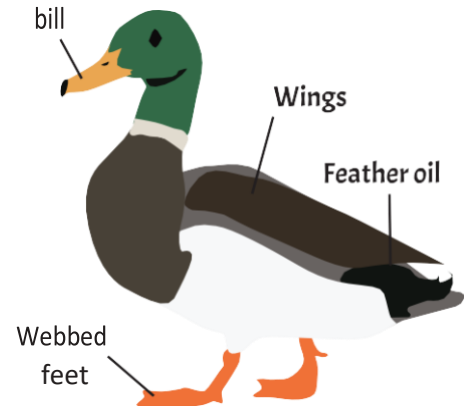


STAY CONNECTED.
STAY CURIOUS.

Mix-and-Match Animal Cube

Every living thing has adaptations that help it to survive. We can see some of those adaptations when we look at an animal. What are some adaptations that help birds survive?

Birds have beaks that help them to gather food—whether they eat bugs, fish, fruits, or seeds. Most birds have wings that help them fly. Can you think of a bird that doesn't fly? What does it do instead? Birds also have feet that can help them perch, catch food, or swim.



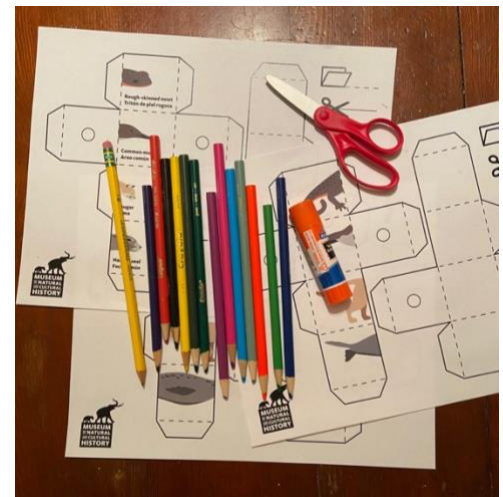
Think of four different animals and their adaptations. Then, draw their heads, torsos, and legs, and turn them into cubes that can be rotated to make a new animal.

You'll need:

- Templates
- Scissors
- Glue or tape
- Pencil
- Drawing supplies

What to do:

1. Cut out the cube templates for each section; heads, torsos, and legs.
2. Use a pencil to poke a hole through the circles on each template.
3. Fold along the dotted lines.
4. Use the fold guides to create a cube. Glue or tape where the flaps overlap.
5. Slide each cube onto a pencil so that they line up. You can now spin each cube around to make new animals with different combinations.
6. Make a combination. What would you call this new animal? How do the different traits it has help it to survive?



Challenge

Use the blank templates to design your own wacky animals.

1. Think of four different animals you want to draw. What makes each animal special? What traits help each animal to survive? Can you highlight those traits in your drawing?
2. Draw the parts of each animal. One template will have all the heads, the other will have all the torsos, and the last will have all the legs or tail end. It can be helpful to lay the templates side by side to draw each animal.
3. Follow steps 1 through 6 above.

